

# DIAMONDBACK

*Fitness*



**910Ef**

*FRONT DRIVE ELLIPTICAL TRAINER  
OWNER'S MANUAL*

## PURCHASER'S REFERENCE INFORMATION

PLEASE RECORD DETAILS ASSOCIATED WITH THE PURCHASE OF YOUR 910Ef BELOW. THIS INFORMATION WILL BE REQUIRED IN THE EVENT THE UNIT REQUIRES FUTURE SERVICE.

**\*ATTACH THE PURCHASE RECEIPT HERE:**

**Product Name:** Diamondback 910Ef Front Drive Elliptical Trainer

**Serial Number:** E \_\_\_\_\_

**Date Purchased:** \_\_\_\_\_

**Dealer Name:** \_\_\_\_\_

**Dealer Address:** \_\_\_\_\_  
\_\_\_\_\_

**Dealer Contact Name:** \_\_\_\_\_

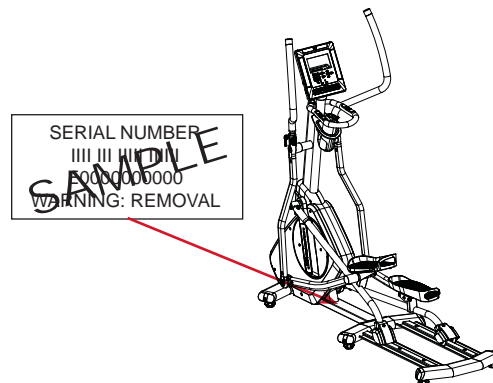
**Dealer Telephone Number:** (    ) \_\_\_\_\_

**To Activate Warranty:** Register the unit at [www.diamondbackfitness.com](http://www.diamondbackfitness.com) OR complete the attached warranty card (see last page) and return it to Diamondback Fitness within 15 days of purchase.

Failure to comply may limit or void the Manufacturer's warranty coverage.

**Shipping Materials:** Diamondback Fitness recommends that you retain the original packing materials (box and packing items) for future shipping needs.

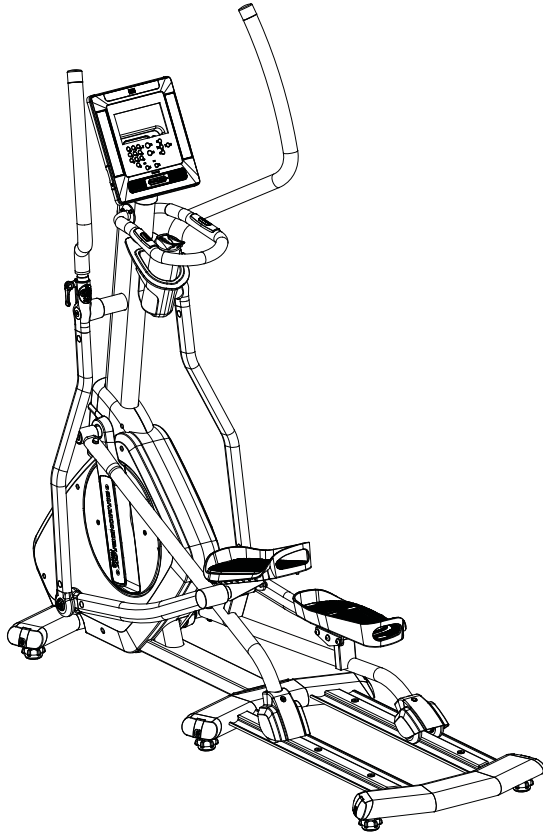
**Warranty:** \_\_\_\_\_ Mailed \_\_\_\_\_ Online \_\_\_\_\_ Date \_\_\_\_\_



**Serial Number Location**

# 910Ef Owner's Manual

**SAVE THIS OPERATING INSTRUCTIONS MANUAL FOR YOUR REFERENCE.**



**910Ef**

**Front Drive Elliptical Trainer**  
Diamondback Fitness

Release v.1 (8/2011)

## TABLE OF CONTENTS

PURCHASER'S REFERENCE INFORMATION - Inside Front Cover	
INTRODUCTION	3
SAFETY INSTRUCTIONS & WARNINGS	4
CARTON CONTENTS	7
ASSEMBLY INSTRUCTIONS	8
WORKOUT GUIDELINES	15
WORKOUT QUALITY AND QUANTITY	19
CONSOLE OVERVIEW & GENERAL NOTES	20
CONSOLE OPERATION AND FEATURES	25
GLOSSARY OF TERMS	27
PROGRAMS	28
MAINTENANCE	46
WARRANTY INFORMATION	47
WARRANTY REGISTRATION CARD	51

## INTRODUCTION

Congratulations on the purchase of your new 910Ef Front Drive Elliptical Trainer from Diamondback Fitness. You have made a smart choice and are about to enjoy one of the most effective and technically-advanced methods of cardio-vascular exercise available today.

Founded in 1991 as an off-shoot of the legendary bicycle division, Diamondback Fitness was in many ways a complimentary addition to the Diamondback brand. One might even say this extension grew as a natural evolution from classic outdoor bicycle usage toward indoor-based cycling and cross training. It turns out many fitness enthusiasts were searching for ways to maintain conditioning during times of inclement weather or were simply looking for new and different crosstraining options.

This trend still continues today, twenty years later, as the strong Diamondback brand resonates with both the boomers who grew up with the bicycles, as well as the younger generations riding them today.

Diamondback Fitness continues to build upon this legendary brand identity by offering the cardio enthusiast a full line of upright bikes, recumbents, indoor cycles, and elliptical trainers that offer great value, high quality and intuitive & visually-pleasing design. Let's just say, we are already planning our next twenty years.

## **Diamondback Fitness**

**6004 South 190th Street Suite 101 Kent WA 98032 Ph. 1.800.776.7642 Fax: 1.800.776.2073**

For more information or questions regarding your equipment, please visit our website at [www.diamondbackfitness.com](http://www.diamondbackfitness.com)

## SAFETY INSTRUCTIONS & WARNINGS

Every piece of Diamondback Fitness equipment is built for maximum safety and meets or exceeds all applicable domestic and international standards. However, certain precautions must be taken when operating any exercise equipment.

***NOTE: Please read the entire owner's manual before operating the 910Ef.***

### CAUTION - FOR SAFE OPERATION

- Keep your hands and feet away from all moving parts and pinch points.
- If you have a history of heart disease, high blood pressure, diabetes, chronic respiratory diseases, elevated cholesterol, or if you smoke cigarettes or experience any other chronic diseases or physical complaints, consult with a physician before beginning any exercise program.
- If overweight, or above the age of 35, consult with your physician before beginning any exercise program.
- Pregnant women should consult with their physician before beginning an exercise program.
- If you experience dizziness, nausea, chest pains or other abnormal symptoms during exercise, stop the exercise session immediately and consult your physician.
- Consume water before, during and after each exercise session.

## SAFETY INSTRUCTIONS & WARNINGS

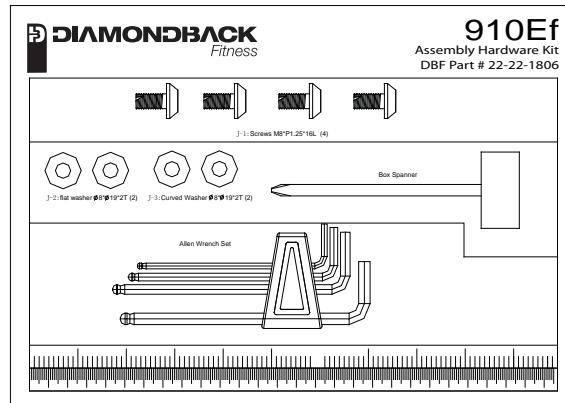
### WARNINGS - TO REDUCE RISK OF INJURY TO YOURSELF OR OTHERS

- To ensure proper functioning of your unit, do not install attachments or accessories not provided or recommended by Diamondback Fitness.
- Always wear proper clothing and shoes when exercising.
- User weight is not to exceed 325 pounds (147.4 Kg) for the 910Ef.
- Keep children away from the unit. Hands and feet may become entangled with the moving parts and could result in serious injury.
- Place the unit in an area that will meet minimum clearance requirements:
  - front & sides = 24 inches
  - rear = 12 inches.
- The unit is intended for indoor use only.
- Place the unit on a solid, level surface. Always adjust the leveling feet before using to ensure stability.
- Ensure all adjustment knobs and levers are fastened securely before using the unit and after making an adjustment.
- Use the handlebars when stepping on and off the unit.
- The unit is heavy. Do not attempt to move alone.
- Never operate the unit if it is damaged or broken. Contact your local authorized Diamondback Fitness Dealer for service.
- Always unplug the unit from the power source before moving or servicing.
- Do not remove the covers or other components. Only Authorized Diamondback Fitness Dealers or Authorized Technicians should perform service on the unit.

## SAFETY INSTRUCTIONS & WARNINGS

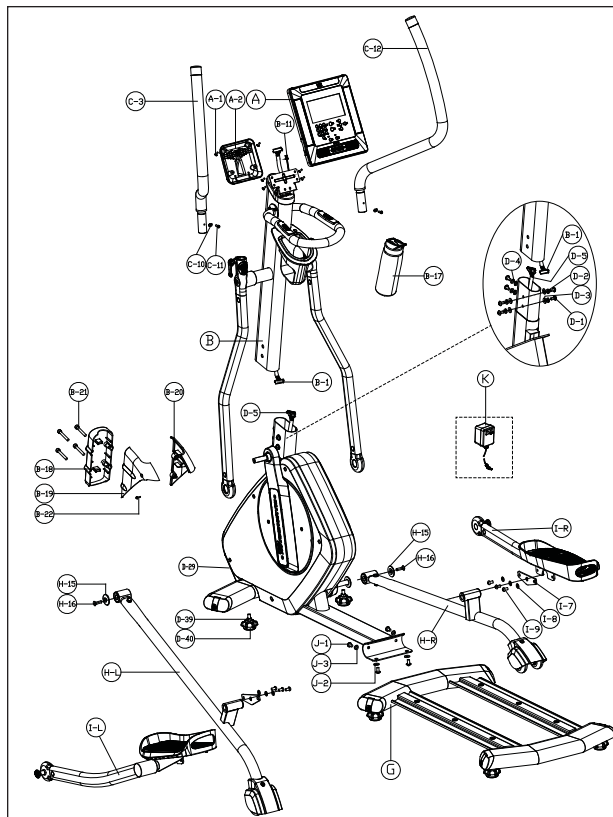
### *Assembly of Technical Items*

Assembly of all Diamondback Fitness products should be performed by a Diamondback Fitness Dealer or Authorized Technician. A significant amount of technical knowledge is required for the safe and complete assembly of the unit. Many retailers will offer delivery and assembly as part of the sales agreement. If this unit was sold unassembled (in the carton) and you do not feel you can perform the assembly successfully, please call the dealer for service. Service calls for improper assembly are not covered by the Warranty Policy and any associated charges will be the responsibility of the owner. Assembly may include adjustment and alignment of side cases and attachment brackets as needed for proper function.





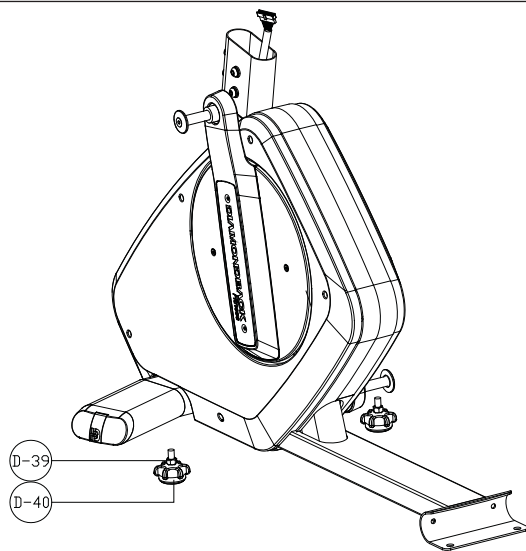
## CARTON CONTENTS



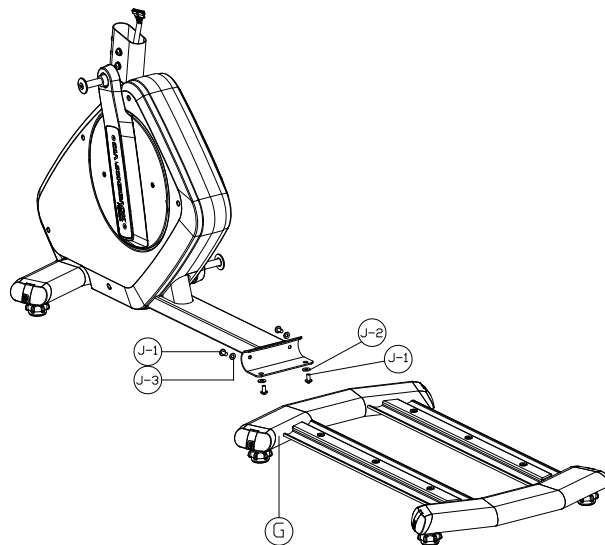
### Parts List

Item	Description	Quantity
A	Console	1
A-1	Console Fixing Screw	4
A-2	Console Back Cover	1
B	Console Mast	1
B-1	Wire Harness Upper	1
B-11	Heart Rate Console Wire	1
B-17	Water Bottle	1
B-18, 19, 20, 21, & 22	Console Mast Cover & Hardware	6
C-3	Handlebar Left	1
C-12	Handlebar Right	1
C-10	Limit Washer	2
C-11	Red Allen Bolt	2
D-1, 2, 3, & 4	Mast Hardware	6
D-5	Wire Harness Lower	1
D-29	Power Input Jack (Lower Front)	1
D-39	Leveling Foot Lock Nut	6
D-40	Leveling Foot	6
G	Rail Frame	1
H (R&L)	Step Arms (1 Right / 1 Left)	2
H-15	Washer	2
H-16	Allen Bolt	2
I (R&L)	Pedal Arm (1 Right / 1 Left)	2
I-7, 8, & 9	Pedal Arm Hardware	14
J-1, 2, & 3	Assembly Hardware	8
K	Power Supply/Adaptor	1

## ASSEMBLY INSTRUCTIONS

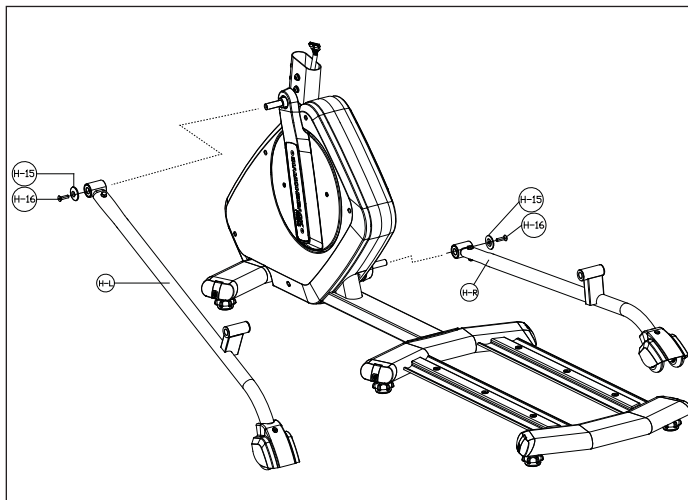


- Unpack the 910Ef from the carton. Please recycle.
- Assembly will require 2 people.
- Verify the carton contains all parts from the list.
- Install leveling foot (D-40) with lock washer (D-39) under the the front stabilizer.

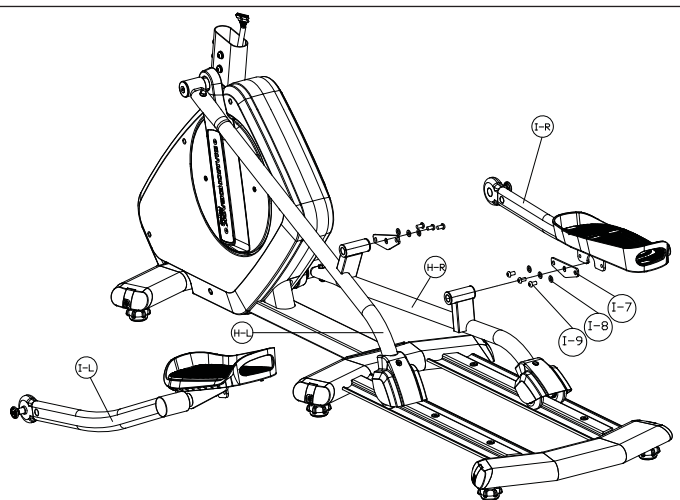


- Install and align the Rail Frame (G), using the side bolt and washer. Make sure all bolts and washers (J-1, & J-3) are aligned and tightend properly. ***Note - A loose bolt could cause misalignment of the track and cause poor wheel alignment and or a rubbing sound.***
- Tighten the bottom bolts and washers (J-2 & J-1), have one person tilt machine forward, resting the weight on the stabilizer roller while the other person installs and tightens the bottom bolts. ***Use CAUTION when performing this step, use two(2) people!***

## ASSEMBLY INSTRUCTIONS

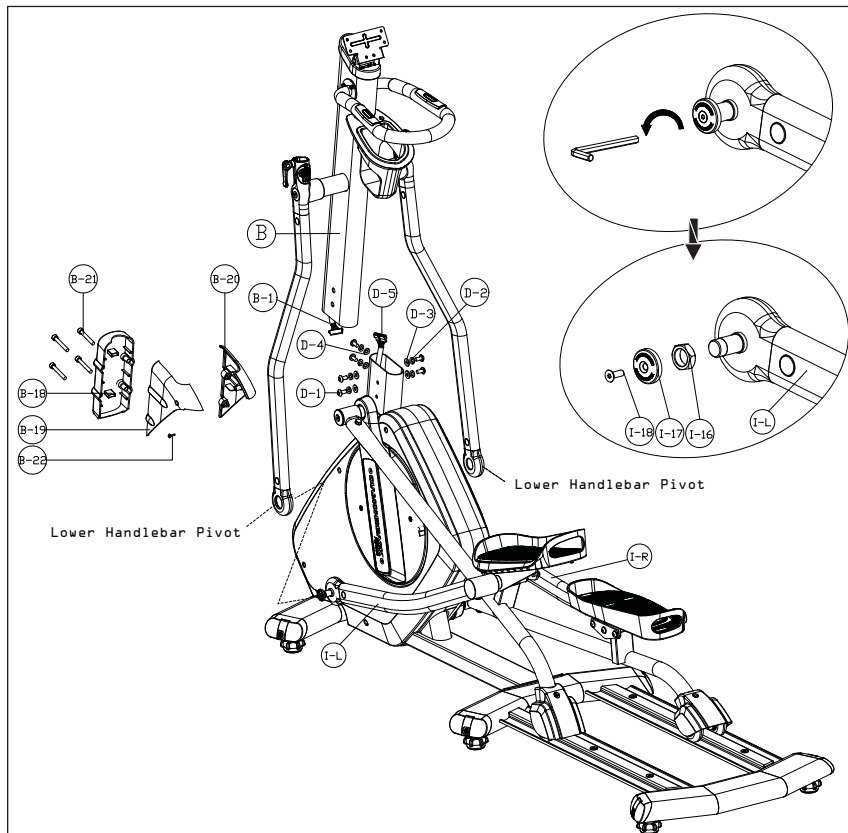


- Install the Step Arms (H-L & H-R) by using the washer (H-15) and Bolt (H-16). Repeat for opposite side, make sure to tighten firmly.



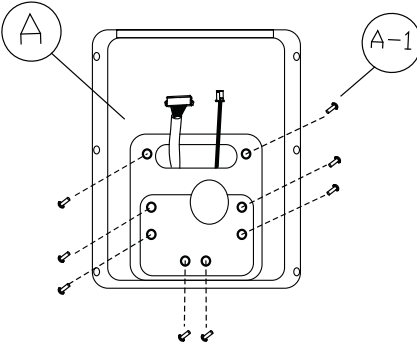
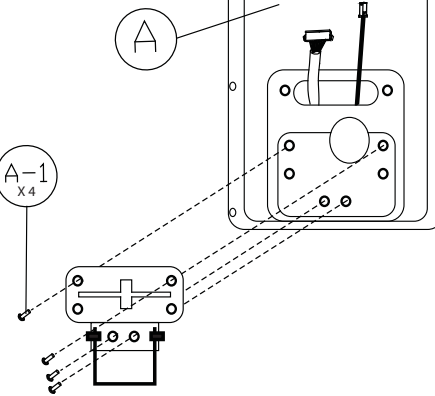
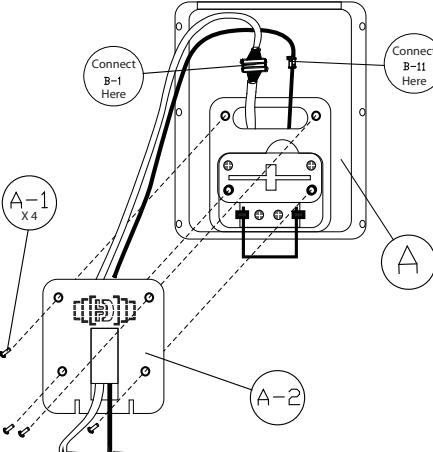
- Install the Pedal Arms (I-L & I-R) to the Step Arms (H-L & H-R) by using the bolts and washers (I-9 & I-8) and install into (I-7) Footbed bracket. Repeat for opposite side, make sure to tighten firmly.

## ASSEMBLY INSTRUCTIONS

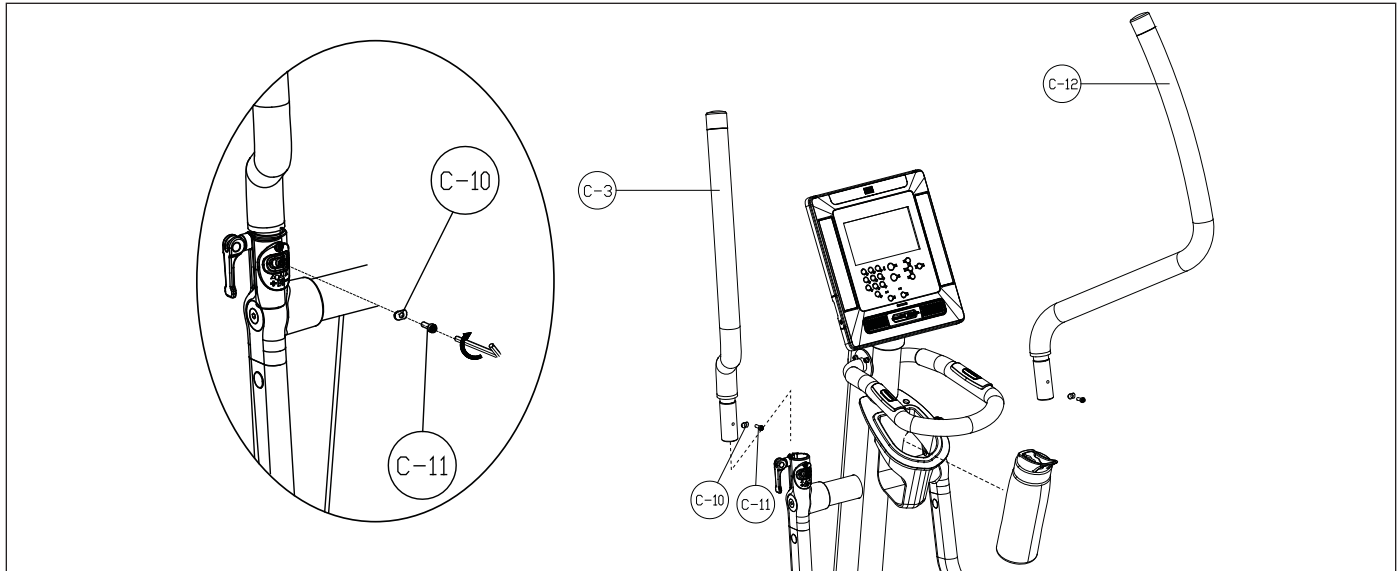


- Remove the Mast Bolts and Washers (D-1, D-2, D-3 & D-4).
- Connect the Wire Harness Upper (B-1) to Wire Harness Lower (D-5) taking care to ensure the connection is firm.
- Pull the wire harness from top of mast upward.
- Slide the upper mast(B) down onto the lower frame. **Use CAUTION and do not pinch wire harness cable or connector.**
- Re-install Mast Bolts and Washers (D-1, D-2, D-3 & D-4) and tighten.
- Assemble the bolt cover over the mast connection. Place (B-19) and (B-20) around mast and fix screws (B-22) into position.
- Place front cover into position and instal bolts (B-21) by hand - note- these bolts do not require a large amount of force, use caution when tightening into place.
- Install the Pedal Arm (I-L & I-R) into the Lower Handlebar Pivot and fix with (I-16) nut, tighten firmly. Then using the allen wrench install the cover cap (I-18) with the screw (I-17). Then tighten firmly.

## ASSEMBLY INSTRUCTIONS

 <p>A diagram of the back of a console. Eight screws, labeled 'A-1', are shown being removed from the back cover, which is labeled 'A'. Dashed lines indicate the removal of the screws from their positions.</p>	 <p>A diagram showing a tilt mounting plate being aligned with the back of the console (A). Four screws, labeled 'A-1 X4', are shown being inserted through the mounting plate into the console's back cover.</p>	 <p>A diagram showing the internal wiring of the console. A wire harness (B-1) and a heart rate console wire (B-11) are shown entering the console through a hole in the back cover (A-2). The wires are connected to a terminal block. Labels include 'Connect B-1 Here', 'Connect B-11 Here', 'A-1 X4', and 'A-2'.</p>
<ul style="list-style-type: none"> <li>Remove all 8 screws (A-1) from the back of the console (A).</li> </ul>	<ul style="list-style-type: none"> <li>Install the top 2 screws (A-1) through the tilt mounting plate and screw into the back of the console (A).</li> <li>Install the bottom 2 screws (A-1) through the tilt mounting plate and screw into the back of the console (A).</li> </ul>	<ul style="list-style-type: none"> <li>Feed the Wire Harness (B-1) cable and Heart Rate Console Wire (B-11) through the hole in the back cover (A-2) and then connect both to the matching console connector. Take care to ensure the connection is firm. Feed loose excess cable back into mast.</li> <li>Position Console Back Cover A-2 into position and install the remaining 4 screws (A-1) into the console (A).</li> </ul>

## ASSEMBLY INSTRUCTIONS

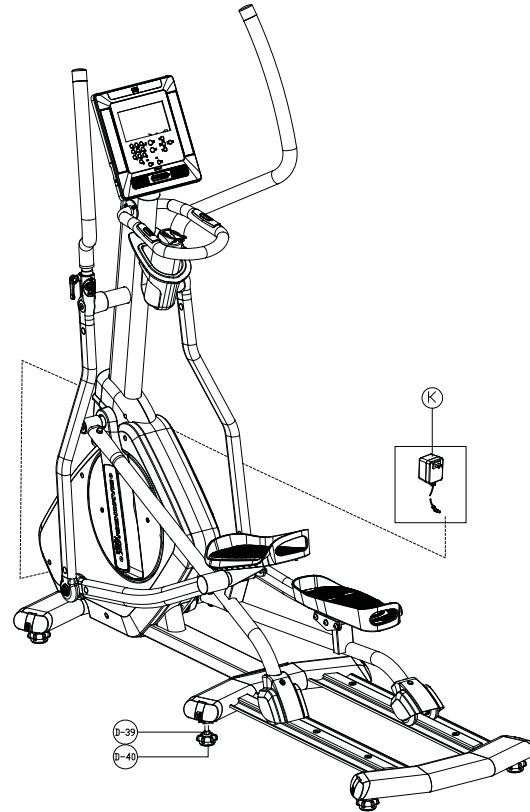


- Install the upper handlebars (C-3) and (C-12) by installing them into the adjustable opening. When in position, install the “Red” Allen Screw (C11) through the Limit Washer (C-10) once the threaded hole is properly aligned.

## ASSEMBLY INSTRUCTIONS

### FINAL INSTALLATION & SET UP

- Moving and positioning the unit. Move the 910Ef into the desired final position by carefully raising the rear end of the unit until the red wheel located on the front stabilizer contacts the floor. Leave room around the unit for safe operation and sufficient air flow.
- Leveling the unit. Level the unit by rotating the six leveling feet (D-40) located in the stabilizer bars. Lock the feet into position by tightening the lock nut (D-39) upward, against the frame.
- Plug one end of the power adaptor (K) into a 120V power source. Plug the opposite end into the power input jack found on the front end of the plastic housing near the stabilizer.



## USER ADJUSTMENTS

### Tilting Console

To ensure users of every stature can maintain a clear and highly visible view of the console, the 910Ef features a tilting console. Hinged at the bottom.

**To adjust the console, grip the display at the top and tilting the entire console fore and aft until the desired viewing angle is achieved.**

### Variable-Width Footbeds



The variable-width footbeds are designed to accommodate the width of an individual's pelvis. A wider pelvis typically indicates the body requires a wider stance. The 910Ef allows the user to adjust the width of the footbeds to more closely match their natural alignment and mechanics.

**To adjust the footbeds, remove the six (6) clear plastic footbed caps and set aside. Loosen the six (6) Allen bolts until the footbeds move freely. There is no reason to completely remove the bolts. Align the footbeds to the desired position as indicated by the markings on the footbed liner. Re-fix the footbeds by tightening the six (6) Allen bolts. Reinstall the six (6) footbed caps.**

### Adjustable-Width Handlebars



The adjustable-width handlebars are designed to accommodate an individual's body mechanics. Rather than attempting to adjust the user's natural motion to one that is fixed and inflexible, the 910Ef offers a customized fit. The three handlebar positions allow the width to be adjusted.

**To adjust the bars, open the red quick-release levers on the left and right pivots. Select the desired position and reset the quick release lever. The pressure required to lock the lever should be sufficient to remove any movement of the handlebar. Adjustment of the lever is similar to a nut and bolt. Hold the lever in the open position and rotate the nut on the opposite end clockwise to tighten and counter-clockwise to loosen. While holding the handlebar in the desired position, close the lever. The amount of pressure required to properly lock the lever should leave an impression in the palm of the user's hand.**



## WORKOUT GUIDELINES

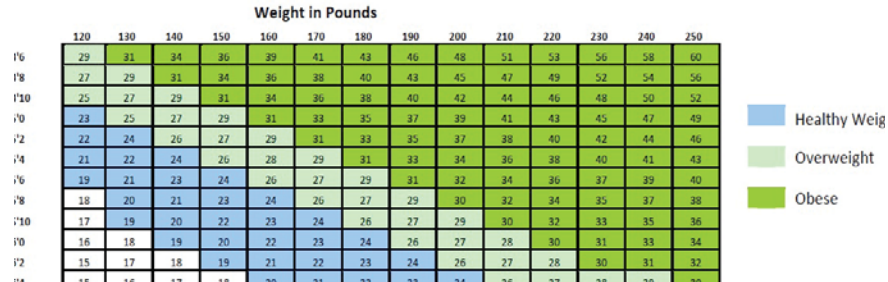
### Good health is an exercise in common sense.

In the study titled, *"The Surgeon General's Call To Action To Prevent and Decrease Overweight and Obesity"*, the Surgeon General indicates that 61% of American adults are either overweight or obese. The study indicates that being overweight increases the risk of health problems, such as heart disease, certain types of cancer, type 2 diabetes among other afflictions.

The Surgeon General's Healthy weight advice for consumers is:

- Aim for a healthy weight: Find your Body Mass Index (BMI) on the chart below.
- Be active: Keep physically active to balance the calories you consume.
- Eat well: Select sensible portion sizes.

Index; BMI = (weight (lb) / height<sup>2</sup> (in)) x 703



## WORKOUT GUIDELINES

### Tilting Console

To ensure users of every stature can maintain a clear and highly visible view of the console, the 910Ef features a tilting console. Hinged at the bottom.

**To adjust the console, grip the display at the top and tilting the entire console fore and aft until the desired viewing angle is achieved.**

### Variable-Width Footbeds

The variable-width footbeds are designed to accommodate the width of an individual's pelvis. A wider pelvis typically indicates the body requires a wider stance. The 910Ef allows the user to adjust the width of the footbeds to more closely match their natural alignment and mechanics.

**To adjust the footbeds, remove the six (6) clear plastic footbed caps and set aside. Loosen the six (6) Allen bolts until the footbeds move freely. There is no reason to completely remove the bolts. Align the footbeds to the desired position as indicated by the markings on the footbed liner. Re-fix the footbeds by tightening the six (6) Allen bolts. Reinstall the six (6) footbed caps.**

### Adjustable-Width Handlebars

The adjustable-width handlebars are designed to accommodate an individual's body mechanics. Rather than attempting to adjust the user's natural motion to one that is fixed and inflexible, the 910Ef offers a customized fit. The three handlebar positions allow the width to be adjusted.

**To adjust the bars, open the red quick-release levers on the left and right pivots. Select the desired position and reset the quick release lever. The pressure required to lock the lever should be sufficient to remove any movement of the handlebar. Adjustment of the lever is similar to a nut and bolt. Hold the lever in the open position and rotate the nut on the opposite end clockwise to tighten and counter-clockwise to loosen. While holding the handlebar in the desired position, close the lever. The amount of pressure required to properly lock the lever should leave an impression in the palm of the user's hand.**

## WORKOUT GUIDLINES

### Calculated Maximum Heart Rate & Target Training Zone

Your calculated target heart rate, or the ideal intensity needed to improve cardiovascular fitness, depends primarily upon your age rather than your current state of fitness. If the exercise intensity is too low or too high, only modest gains will be made in strength and cardio-vascular fitness. A workout at a very low intensity will not offer maximum benefits. Conversely, if the workout intensity is too high, injury or fatigue may slow the progression of your exercise goals as the body attempts to recover.

**Note:** *It is most effective to train at a heart rate between 60% and 85% of your maximum heart rate. Maximum heart rate is calculated as a percentage of your maximum heart rate (estimated as 220 beats-per-minute minus your age).*

To calculate your maximum heart rate and find the appropriate target training zone, use the following formulas. For example, the following estimation would be relevant for a 35 year-old user:

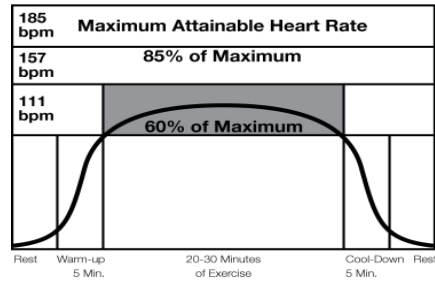
$$\begin{array}{ll} 220 - \text{Age} = \text{Maximum Heart Rate} & (220 - 35 = 185) \\ 60\% \text{ of Maximum Heart Rate} & (60\% \times 185 = 111\text{bpm}) \\ 85\% \text{ of Maximum Heart Rate} & (85\% \times 185 = 157\text{bpm}) \end{array}$$

Based on these calculations, the recommended heart rate training zone for this user would be between 111 Bpm – 157 Bpm.

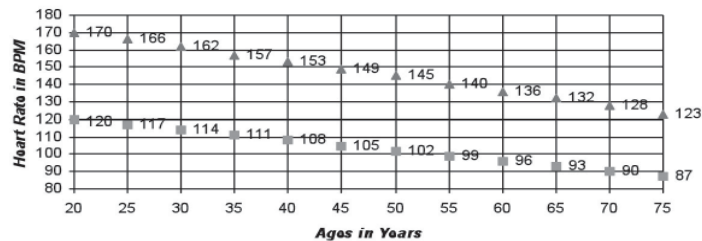
The graphs on the next page displays the recommended heart rate training zone for users twenty years of age to seventy-five years of age.

## WORKOUT GUIDLINES

### Typical Target Zone Exercise Patterns for 35 year-old



### Heart Rate Guidelines 60% - 85% Maximum Target



▲ = 85%    ■ = 60%

## WORKOUT GUIDLINES

### WORKOUT QUALITY AND QUANTITY

It is recommended that you accumulate at least 30 minutes of physical activity most days of the week. Physical activity should be initiated slowly and the intensity should be increased gradually. You should select activities that you enjoy and can fit into your daily life. Having Diamondback Fitness equipment at home certainly gives you the comfortable and convenient workout you want.

The American College of Sports Medicine makes the following recommendations for the quantity and quality of training for developing and maintaining cardio respiratory fitness in healthy adults:

- An activity that uses large muscle groups, maintained continuously, and is rhythmical and aerobic in nature.
- Duration: 20 to 60 minutes of continuous aerobic activity, including a warm-up and cool-down period, for each exercise session.
- Frequency: 3 to 5 times per week.
- Intensity: 60% to 85% of maximum heart rate.

In addition to aerobic exercise, strength training of moderate intensity twice per week is recommended. Women especially may benefit from weight-bearing exercises. Select activities you enjoy and can fit into daily life. Having Diamondback Fitness equipment at home offers you the opportunity to work out without going to the gym.

### Get a smart start on exercising

Anyone over the age of 35, as well as, younger persons who are overweight, should check with his/her physician before beginning any type of exercise program. People who have diabetes or high blood pressure, a family history of heart disease, high cholesterol or have led a sedentary lifestyle should protect themselves with a medical check-up and a stress test, preferably administered during exercise by a health care professional.

- Always stretch before your workout to loosen muscles, and afterward to cool down.
- The first few minutes of your workout should be devoted to warming up muscles before a vigorous workout, and building your heart rate slowly.
- After your aerobic workout of about 24-32 minutes, spend 10 minutes gradually reducing your heart rate with a lower resistance level.

***NOTE: Start slow, with intensity low until you build up endurance and strength. Always consult your physician before beginning any exercise program.***



## CONSOLE

### Level / Resistance



The resistance level currently being applied is displayed in the Level field. Alternatively, the load or resistance level is also displayed in the display matrix as a flashing column. There are thirty-two (32) resistance levels to choose from.

### Time Displays (Total Time & Segment Time)



Located in the center of the upper display are the Total Time and Segment Time clocks. The Total Time field will count up the total elapsed time for the current program, then switch to display the total time remaining. The display will switch between these two values every five seconds. The Segment Time display time will alternate the display between the elapsed and remaining time for the current segment of the program. The segment time is equal to 1/20th of the total program time and is graphically displayed in the Display Matrix field. The user can lock these displays in the current time function (Elapsed or Remaining) by pressing the right arrow key.

### Watts



Watts are a measurement of energy level and are frequently adopted within the fitness industry to track the amount of work generated at any given time during a workout. Watts are calculated with input from the user's current Speed and Level/Resistance.

### Heart Rate / Beats-per-minute (BPM)



When the user's heart rate signal is detected via the heart rate sensors on the fixed handlebar or a wireless transmitter (such as a chest strap) the heart and DB symbols will flash and the user's current heart rate will be displayed. If the user's heart rate signal is not detected, No Signal will light and the heart rate display will post "--".



When operating a heart rate control program, Target Heart Rate Achieved will be lit if the user's current heart rate is within the defined range. The "DB/Heart" logo will flash to indicate that a heart rate signal is being received.

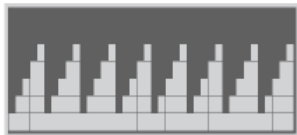
## CONSOLE

### Heart Rate Bar Graph



The Heart Rate Bar Graph provides the user with meaningful heart rate feedback in an easy-to-read format. When a heart rate signal is detected, the bars of the graph will light to indicate at which percentage of the user's maximum heart rate and training zone (Warm Up, Fat Burn, Cardio, or Peak) the user is operating within. The Heart Rate Bar Graph will not light if the user is operating in guest mode or no heart rates signal is detected. If the QuickStart program is running, the default age value will be used to calculate the estimated maximum heart rate.

### Matrix Display



When the console operates in the program run mode, the matrix will graphically display the resistance level and profile for the selected program. A higher stack represents a higher resistance level, while a flashing column indicates the user's progress in the program at any given time.

Each vertical column represents a time interval determined by the total length of the program.

Each column will equal 1/40th of the total program length. For example, if the program length

is 30 minutes, each column will equal 45 seconds. The Matrix Display will also provide messaging and feedback during the setup modes.

### Distance



Distance will be displayed in either Miles or Kilometers, depending upon the selection made in the console setup mode (***see section titled English Unit Mode and Metric Unit Mode***). The distance calculation is an estimation based upon the user's RPM.

### Calories



The Calories field tracks the estimated number of calories burned from the beginning of the program and is a derivative of the Watts generated, the user's RPM and the resistance level.



## CONSOLE

### Speed



Speed is displayed as Miles-per-Hour or Kilometers-per-Hour (depending upon the current console setting) and is based upon the revolutions per minutes (RPM).

### RPM



RPM or revolutions-per-minute. A revolution is defined as one complete foot rotation. RPMs are the number of complete rotations a single foot completes in sixty seconds.

### Scrolling Messaging Display



The Distance, Calories, Speed & RPM fields also serve as a messaging center. During the user and console setup modes, information will post or scroll information and instructions to aid the user.

## CONSOLE KEYS

### GO / QuickStart Key



From the Idle, Banner or Demo modes press the GO/QuickStart key to immediately launch the QuickStart program and bypass data entry. Pressing the GO/QuickStart key in the Setup mode will launch the displayed program.

### STOP Key



Pressing the STOP key during the Program Run mode will pause the unit for five (5) minutes. Pressing the STOP key twice will end the current program, post the Workout Summary and return the unit to the Idle mode. Pressing the STOP key consistently for two seconds will reset the unit, erase all user-entered data and return the console to the

## CONSOLE

Idle mode.

### UP & DOWN Arrow Keys



The UP and DOWN arrow keys are the primary method for adjusting values in the setup modes. During the Program Setup mode, the UP/DOWN keys will adjust Age, Weight and Time entries. During the operation of a workout program, the UP and DOWN keys will adjust the resistance level or target heart rate setting.

### RIGHT Arrow Key QuickSet Keypads.



The RIGHT arrow key allows the user to select the displayed data when in the setup modes. During program run mode, the RIGHT Arrow Key toggles the data switching feature for the Total Time and Segment Time on and off.

### ENTER Key

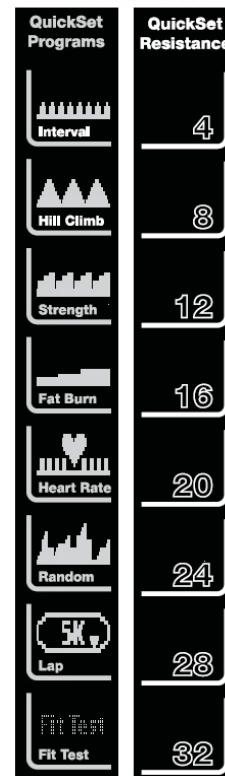


The ENTER key will confirm the selection of the displayed data during the setup modes.

### QuickSet Program & Resistance Keys

The QuickSet Program keys allow the user to quickly launch a program category with a single button press. The QuickSet Resistance keys provide one-touch adjustments to the resistance during the program run mods.

### QuickSet Keypads.



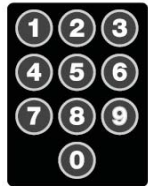
## CONSOLE FEATURES

### USER Key



The USER key offers a shortcut to launching the program. The last program associated with a user profile will be stored in the shortcut. Launching this program will require minimal key presses.

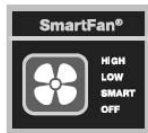
### Numeric Entry Keypad



To speed the input of data, the 910 console is fitted with a numeric keypad. The user may input numeric data during the Setup Modes for Age, Weight, Target HR values.

## CONSOLE FEATURES

### SmartFan® High Output Fan



This unit is equipped with a high-output fan to offer greater comfort during the workout. The adjustable louver allows the user to direct the airflow. Pressing the SMARTFAN button once will power the fan on in the low airflow setting. Pressing the button a second time will increase the fan speed to the high setting and maximum output. A third key press will turn on the SmartFan mode. As the user's work level increases, the fan output will increase. As the user's workload or effort decreases, so will the fan output.

### Visual Prompting

To provide visual cues for the user when data entry is required, the control and entry keys feature LED lamps which will light to indicate which options are available. The unlit keys are not active. This feature decreases the number of key options and speeds the data entry process.

## CONSOLE FEATURES

### Media Bay

At the top of the console is a flip-top door which conceals a small tray. The tray is designed to accept various portable electronics, including Mp3 players, cellular telephones. Additionally, the 910 console offers a charging station for many Apple products, including the iPad, iPhone and iPod. To dock an Apple© product, open the media bay door and slide the iPad©, iPhone© or iPod© downward onto the power connector.

### USB Charging

To allow charging of small electronics, including cellular telephones and Mp3 players, the 910 console is equipped with a USB charging port located inside the media bay. Some electronics may not charge. Power cords are not supplied.

### MP3/iPod Input Jack and Speakers

The 910 console offers an on-board amplifier and a pair of stereo speakers which can be connected to an Mp3 player, iPod or iPhone. Connect one end of a male-to-male stereo cable (not included) to the headphone jack (or audio out) on the device. Plug the other end of the cable into the port located at the top of the console, under the left edge of the media bay door. Sound levels are controlled by the device so be sure to check the internal device settings if the noise level is not satisfactory.

### Tilt Viewing

The 910 is equipped with a tilting console to provide all users with a clear and direct view of the displays. The console pivots at the base. To tilt the console, firmly grasp the top of the console. Do not over-extend the tilt range as damage may occur.

## GLOSSARY OF TERMS

**Banner/Idle Mode** The Banner Mode may also be described as the Idle Mode. Power is supplied to the console and all segments and keypad LED lamps will light in sequence to indicate that the unit is ready for operation. Programs and Setting modes may be launched from the Banner Mode. The Banner Mode will time out in four (4) minutes and enter Power Save Mode if no input is received in the form of console key presses or pedal rotation.

**Demo/Idle Mode** The Demo Mode operation is identical to the Banner Mode except the console will never power off and does not enter the Power Save Mode. Primarily used for in-store displays, the console ships with the factory default of “Demo Mode On”. The user may choose between the Demo Mode and the Banner Mode in Console Setup mode (see the section titled Console Setup).

**Power Save Mode** The unit will be plugged in, but no power will be supplied to the console. Pressing any key on the console will launch the Banner Mode. The unit will enter Power Save mode after five (5) minutes of inactivity.

**LCD** An acronym for liquid crystal display. The 910 display screen is an LCD with integrated backlighting for excellent visibility.

**Watts** A unit of measurement which correlates to the rate energy is generated.

**Resistance Level** Also called intensity level. The load applied to the workout by the unit. The higher the intensity level, the higher the resistance. There are thirty-two (32) resistance levels.

**Heart Rate Control** Also called Interactive or Heart Rate Control. To maintain a constant heart rate target, the computer console will automatically adjust the resistance or load up or down to increase and decrease the user's heart rate.

**Heart Rate Sensors** Located on the fixed handlebar, the user can monitor their heart rate during a workout by simply gripping the touch heart rate sensors.

## PROGRAM CATEGORIES

### Default Values

<b>Age:</b>	35 years
<b>Weight:</b>	150 pounds (68 kg if system is operating in metric mode)
<b>Time:</b>	30 minutes
<b>Resistance Level:</b>	Level 1

### English Unit Mode and Metric Unit Mode

The default unit setting for the console is the English measurement system. To toggle between the English and Metric unit modes, press and hold the UP and DOWN keys, simultaneously for two (2) seconds while in the Banner or Demo modes. “Set units” will post in the lower display screen while the Matrix Display will flash either “English” or “Metric” to indicate the current unit setting. Press the UP or DOWN keys until the desired unit mode is displayed. Press ENTER to accept the selection.

### Operating Notes

<b>Power On and Off</b>	When the AC adapter is plugged into the unit, all LCD segments on the console will light to confirm power has reached the unit.
<b>Power Save Mode</b>	In the power save mode, press any key or move the step arms to wake up the console and begin operation.
<b>Reset</b>	To reset the console and clear all user data, press and hold the STOP key for two (2) seconds. When the program resets, the console returns to the Idle mode.
<b>Pause and Resume</b>	The user may interrupt or pause a program for up to five (5) minutes during a workout. To pause the program, simply press the STOP button. To resume the program, press the GO key before the five (5) minute Pause mode times out.

## PROGRAM CATEGORIES

<b><i>Resistance Levels</i></b>	During the workout program, the user may press the UP or DOWN keys to adjust the resistance level. Manual resistance adjustments are not available in the heart rate interactive programs.
<b><i>Calculated Maximum Heart Rate</i></b>	An estimated maximum heart rate which may be used to determine a threshold for safe exertion levels. The calculation is $220 - \text{AGE} = \text{Calculated Maximum Heart Rate}$ .

## PROGRAMMING FEATURES

### **Elapsed Time and Remaining Time Switching**

While running a program, the Total Time and Segment Time values will switch between elapsed and remaining. The user may stop the switching and display the current view by pressing the Right Arrow key. Pressing the key again will return the display to switching mode.

### **Workout Summary**

For additional user feedback, the 910 console provides a brief Workout Summary immediately following the completion of the workout session. "END" will post in the Matrix Display and total Time, Distance and Calorie values for the workout will be displayed for thirty (30) seconds. The console will then return to the Idle screen.

## CONSOLE SETUP

### Console Default Settings

This unit is shipped with the default values appropriate for the U.S. market.

<u>Setting</u>	<u>Default/Factory Setting</u>	<u>Available Settings</u>
<b>Units</b>	English	English, Metric
<b>Model</b>	Will match the current unit model	910Er, 910Er, 910Sr, 910Ub
<b>Sound</b>	On	On, Off
<b>Backlight</b>	High	High, Low
<b>Demo Mode</b>	On	On, Off

### Console Setup Launch

If the user would like to update the default values, pressing the UP and DOWN arrows keys simultaneously for two (2) seconds will launch the Console Setup mode.

**Units Setup** When the Console Setup mode is launched, “Set Units” will post in the lower display field. “English” or “Metric” will flash in the Matrix Display, depending upon current setting. Use the UP or DOWN arrow keys to scroll through the available settings and press the ENTER key to select the displayed option. Press ENTER to launch the Model Number Selections mode. Changing the units will erase all user data.

**Model Number** “Set Model Number” will post in the lower display field. “910Sr”, “910Ub” or “910Er” will flash in the Matrix Display, depending upon current setting. Confirm the model number of your unit. Use the UP and DOWN arrow keys to view the available settings. When the correct model is displayed, press ENTER to select and launch the Sound Settings mode.



## CONSOLE SETUP

- Sound Settings** "Sound Setting" will post in the Lower Display. "Sound" will also post in the Matrix Display, followed by a flashing "On" or "Off" to indicate the current setting. Scroll between the two settings via the UP and DOWN arrow keys, pressing the ENTER key to confirm the selection and launch the Backlight Settings mode.
- Backlight Settings** "Backlight Setting" will post in the Lower Display. "Backlight" will scroll once in the Matrix display, followed by a flashing "High" or "Low" to indicate the current setting. Scroll between the two settings via the UP and DOWN arrow keys. Confirm the setting by pressing the ENTER key. Demo Mode Settings will launch
- Demo Mode Settings** "Demo Mode settings" will post in the lower display. "Demo Mode" will also scroll once in the Matrix Display, followed by a flashing "On" or "Off" to indicate the current setting.

***Demo Mode On*** = console never powers off.

***Demo Mode Off*** = console power off after four (4) minutes of inactivity.

Scroll between the two settings via the UP and DOWN arrow keys, pressing the ENTER key to confirm the selection and launch the Total Time and Total Distance viewing mode.

- Total Time & Total Distance Values** "Total run time" will post in the Lower Display field, followed by the value representing the length of time the unit has been operated. "Total distance" will then post followed by the total cumulative time value. This value represents the amount of time the unit has been in one of the program Run modes. The console will then return to the Idle screen.

## PROGRAMS

### QUICK START PROGRAM

The QuickStart program option is for users who wish to bypass the User Setup mode and immediately launch a workout session. Adjustments to the resistance can be made at any time via the UP and DOWN keys.

**Selection** Press the GO/Quick Start key to launch the Manual program with the following defaults values:

- Time = 30 minutes
- Resistance Level = 1

**Launch** Once the program begins:

- Program Run Time will count down from 30:00 minutes.
- The Pulse display will show a heart rate if a signal is detected via the touch heart rate sensors or the wireless pulse receiver.
- The Matrix Display will show the workout profile.
- The lower data display fields will track Distance, Calories, RPM & Speed.
- The UP and DOWN arrow key lamps will flash to indicate that user adjustments are allowed.
- The user may adjust the resistance level from 1 to 32 during the program via the UP and DOWN arrow keys.
- Press the STOP key once to enter the Pause mode. Pressing the STOP key again will return the console to Program Run mode.

**End** When thirty (30) minutes have elapsed, the Workout Summary will be displayed

## HEART RATE PROGRAMS

Diamondback's Heart Rate programs can also be described as a heart rate control programs. Heart rate control programs automatically increase and decrease the load or resistance levels during the workout to help keep the user's heart rate near a selected heart rate target. For example, if the heart rate target is 132 BPM, and the user's pulse begins to fall, the 910 computer will slowly increase the resistance level. Eventually, the amount of work being performed by the user will increase and so will the heart rate. Conversely, if the user's heart rate climbs above the targeted range, the resistance will decrease, allowing the user's heart rate to fall.

The advantages of heart rate control programs are the simplicity and accuracy by which the ideal cardio-vascular training zone is maintained thereby offering a very efficient workout. For the Target Heart Rate programs to operate, the computer must receive a heart rate signal from the touch heart rate sensors or a wireless heart rate transmitter. For the greatest cardio-vascular benefit, most persons should target a heart rate that is between 60% and 85% of their calculated maximum heart rate. An individual's calculated maximum heart rate is estimated as 220 BPM, minus their age. It is unsafe to exceed 90% of this calculated heart rate.

**NOTE:** *The computer bases all heart rate targets and maximums on the data entered during the User Setup modes. For an effective and safe workout, please enter the correct data for the current user.*

**NOTE:** *The 910 is programmed to warn the user if the heart rate exceeds 95% of their maximum. If use is continued at an unsafe level, the console will end the program as a safety precaution. If this happens unexpectedly, verify that the age value for the current user is correct.*

**NOTE:** *All Heart Rate programs require a pulse signal to be received via the touch heart rate sensors or chest strap (not included). If a signal is not received, the program will end after thirty (30) seconds.*

See the sections titled *Heart Rate is an Important Key to Your Exercise* and *Your Estimated Maximum Heart Rate & Target Training on Zone* for more information regarding target heart rate calculations.

There are three types of heart rate control programs embedded in the 910 console: Heart Rate Interval, Target Heart Rate and Percentage Heart Rate (50%, 60%, 70% & 80%).

## PROGRAMS

### Heart Rate Program Overview

#### ***Heart Rate Interval***

The Interval heart rate training program is similar to the classic interval program with the exception that the resistance levels for each work (high) level and rest (low) level are determined by the user's personal calculated maximum heart rate (see the section titled Calculated Maximum Heart Rate). These calculated work and rest resistance levels will automatically adjust to help the user achieve the targeted heart rate for each segment.

#### ***Target Heart Rate***

The Target Heart Rate program allows the user to select a heart rate value (in beats-per-minute). The console will automatically vary the resistance to ensure the desired heart rate value is maintained throughout the workout session.

#### ***Percentage Heart Rate***

The Percentage Heart Rate programs can also be described as “percent-of-maximum heart rate” programs. The setup and operation of these programs is similar to the Target Heart Rate programming except the console will automatically determine the specific pulse rate target based on the data entered in the user profile and the selected percentage (50%, 60%, 70% & 80%) of their calculated maximum heart rate. See the section titled Calculated Maximum Heart Rate.

### Heart Rate Program Selection



From the Idle mode, press the HEART RATE key in the QuickSet Program keypad to open the heart rate category. “Heart Rate interval”, the first of the available heart rate program titles, will post in the Lower Display. Scroll through the available options (Heart Rate Interval, Target Heart Rate, HR 50% max, HR 60% max, HR 70% max, HR 80% max), via the UP and DOWN arrow keys. Press the ENTER key to select the displayed program and launch the Heart Rate Programs Setup Mode.

## PROGRAMS

### Heart Rate Programs Setup Mode

Once a Classic Program has been selected on-screen messaging will guide the user throughout the Setup Mode.

#### User Selection

"Select user" will post in the Lower Display. "User 1" or the previously-entered User 1 name value will scroll in the Matrix Display. Use the UP and DOWN arrow keys to view the user selection options ("User 1", "User 2" or "Guest"). When the desired user profile is displayed, press the ENTER key to select.

**User 1 / User 2** If the User 1 or User 2 profiles are selected and the User Setup mode steps for the selected profile have not been completed, the console will launch the User Setup mode to obtain the necessary information (see the section titled User Setup Mode for more information). Once the console has stored the required information, the program will launch.

**Guest User** If the Guest profile is selected; the user will be prompted to enter their age value. To ensure the program operates safely, it is important to enter the correct user information.

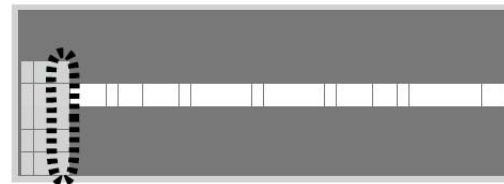
Target Heart Rate Selection (Target Heart Rate program only)

If the Target HR program has been selected, the user must also provide the target heart rate in beats-per-minute (BPM). Adjust the displayed value via the UP and DOWN arrow keys, pressing ENTER to confirm and launch the program.

## PROGRAMS

### Heart Rate Programs Launch Mode

**NOTE:** All heart rate programs rely upon the user's pulse signal to operate. If no heart rate is detected, the program will not operate for more than thirty (30) seconds.



**General** All Heart Rate programs will operate with the following features:

- The Matrix Display will post a horizontal bar to represent the target heart rate. The user's progress within the program will be displayed as a flashing vertical stack.
- The user's actual heart rate will be represented as a stack of vertical segments. Each column represents 1/40th of the total program run time. A flashing column that is below the horizontal line indicates that the user's heart rate is less than the selected target. Conversely, a flashing segment above the horizontal line signifies a heart rate that exceeds the user's target.
- The Level display will indicate the current resistance level. The range is from 1 to 32.
- Total Time field will display the progress made in the total workout. Segment Time will display the progress made in the current segment. The displays will switch between elapsed and remaining time. Elapsed time will count up, while remaining time will count down. To freeze the switching and display only elapsed or remaining time, press the RIGHT arrow key while the desired display is visible. Press the RIGHT arrow key again to resume switching mode.
- The Watts field will display the current output or work being generated by the user.
- Total Distance for the current workout session will be displayed.
- The Heart Rate Display cluster will monitor the user's current heart rate and the bar graph will provide general information regarding the user's current percentage of maximum heart rate.
- If no signal is detected, the Pulse field will display "---" and the No Signal icon will light.
- When a pulse signal is received, the rate will be displayed and the DB/Heart icon will be flash.
- When the user's heart rate is near the target value, the Target Heart Rate Achieved segment will light.

## PROGRAMS

- The Calories field will record the number of calories burned during the workout session.
- RPM or revolutions per minute and Speed will be displayed.
- Visual Key Prompting will operate. The LED lamps on the keypad will flash to indicate which keys may be used to make adjustments to the current programming.
- If the user's heart rate exceeds the calculated maximum, "WARNING. HR too high." will post in the Lower Display. If the heart rate exceeds 90% of the user's calculated maximum heart rate for thirty (30) seconds, the program will end.

### Heart Rate Interval

- The Heart Rate Interval program will alternate between periods of work (80% of max) and rest (60% of max) heart rate targets.
- The length of each segment is dependent exclusively upon the amount of time the user requires to reach the targeted heart rate.
- The resistance level will automatically adjust to increase or decrease the heart rate. When the target heart rate for each segment is achieved for five (5) seconds, the program will adjust the resistance to achieve the next heart rate target.
- The lower display will post messaging at the beginning of each segment to signal the user to increase or decrease their speed to aid in the heart rate increase and decrease.
- The upper and lower targets can be adjusted via the UP and DOWN arrow keys (Upper range = 65% - 80%; Lower range = 60% - 75%).

### Target Heart Rate

- The console will automatically vary the resistance to ensure the desired heart rate value is maintained throughout the workout session.
- When the user's heart rate is within the target range, the Target Heart Rate Achieved segment will light.

## PROGRAMS

### Percentage Heart Rate

- Depending upon the Percentage Heart Rate program selected (50% Max, 60% Max, 70% Max, 80% Max).
- Resistance adjustments will be controlled by the program to ensure the user's heart rate remains within +/- four (4) BPM of the selected target heart rate.
- If the current heart rate is within the target range, the Target Heart Rate Achieve icon will light.

### Ending a Heart Rate Program

At any time during the program, the user may press the STOP key to pause the programming for up to five (5) minutes. To restart the current program, press the GO key. To end the program and view the Workout Summary, press the STOP key twice while the program is running. Pressing the STOP key three (3) times while the program is running will end the program, bypass the Workout Summary and return the console to Idle mode.

## FIT TEST PROGRAM

### Fitness Test Overview



The Fitness Test program has been incorporated within the 910 console to provide the user with the ability to measure and track their fitness gains at home. The Diamondback Fitness version of this test is based upon the standards and protocol the YMCA® employs for the measurement and tracking of an individual's progress towards their personal fitness goals. It should be mentioned that the information provided by this test is relative in nature and is not meant to serve as a precise measurement of one's physical fitness or cardiovascular capacity.

**How the Test Works** - During physical exertion, muscles convert oxygen into the fuel needed for the energy to perform the required tasks. The harder the muscles work, the more oxygen the muscles require. This oxygen is delivered to the muscles via the cardiovascular (blood) system. To keep pace with the increased oxygen demand, the heart increases the delivery of oxygenated



## PROGRAMS

blood by pumping blood through the system faster. As one's fitness level improves, the heart muscles become more efficient at extracting oxygen from the blood and will ultimately require less energy to produce the same amount of work. Since the blood flow requirement is not as great, the heart will beat slower.

The Fitness Test program utilizes this basic knowledge to determine the user's relative fitness level. The test will introduce the user to predetermined workloads while the reaction of the heart is monitored. At the end of the test, a score, based upon the user's results, will post in the lower display. This score serves as a basis to track future test results against. It is advisable to periodically incorporate the Fitness Test program into the user's workout.

***NOTE: The user must provide a heart rate signal via the touch heart rate sensors, or a wireless chest strap transmitter for the Fitness Test program to operate. If no signal is received for a period of thirty (30) seconds, the program will end.***

### **Fitness Test Program Setup and Launch**

To begin, press the FIT TEST key, followed by the ENTER key to launch the Program Setup mode.

### **User Selection**

"Select user" will post in the Lower Display. "User 1" or the previously-entered User 1 name value will scroll in the Matrix Display. Use the UP and DOWN arrow keys to view the user selection options ("User 1", "User 2" or "Guest"). When the desired user profile is displayed, press the ENTER key to select.

***User 1 / User 2*** If the User 1 or User 2 profiles are selected and the User Setup mode steps for the selected profile have not been completed, the console will launch the User Setup mode to obtain the necessary information (see the section titled User Setup Mode for more information). Once the console has stored the required information, the program will launch.

***Guest User*** If the Guest profile is selected; the user will be prompted to enter their age and weight value. To ensure the program operates safely, it is important to enter the correct user information.

## PROGRAMS

### Program Launch

When the Fit Test program launches:

- The console must detect a heart rate to operate.
- The console must detect the user's RPM. If no movement is detected, the unit will enter Pause mode after five (5) seconds of inactivity. To resume the program, begin rotating the pedals and press the GO key.
- The Lower Display will post "Pedal at 50 RPM."
- The Matrix Display will post a horizontal line of segments which show the projected resistance profile and actual resistance profile history. This profile may change as the user's heart rate data is received and the program adjusts.
- If the user's heart rate signal is detected, the heart rate bar graph and DB/heart icon will light
- All other displays will function normally

### **Stage One**

The program will begin with Stage One, a three (3) minute warm-up session.

### **Stage Two, Three and Beyond**

Programming will continue, prompting the user to maintain 50 RPM. After each three (3) minute stage, the next stage will begin with an increased level of resistance. The program will continue until the user successfully completes the test, or the program ends due to lack of input or improper/unsafe heart rates.

## Ending the Fit Test Program

### Successful Test Results

If successful, the Fit Test program will end after the user's heart rate exceeds 110 BPM for two stages. The console will beep to signify the ending of the program and the Lower Display will post "MAX METS =" followed by the fitness rating. "MAX METS" represents your functional capacity for aerobic exercise. It is expressed in METS, or metabolic units. This value factors the user's body weight, but not age or gender (see the chart to the right).

Fit Test Max Mets Values

Value	Score
2.0-2.9	Poor
3.0-6.9	Low
7.0-10.9	Average
11.0-13.9	Good
14.0- 16.0	High

## PROGRAMS

Knowing one's functional capacity can also tell you how difficult it may be to perform certain activities. To illustrate, cycling at 3 mph generally requires about 3 to 8 METS whereas fast cycling at 10 mph requires roughly 7 METS. Armed with a personal MAX METS score, the user can make judgments regarding their exercise regime. For example, if a person's functional capacity is 6 METS, one would be able to determine that riding a bicycle at 10 mph for an extended period of time would be quite difficult (without actually riding the bicycle). For more information on the METS exertion scale and The ACSM (American College of Sports Medicine) visit the website [www.acsm.com](http://www.acsm.com). At the completion of the Fitness Test, the user's results will be returned. See the chart above for a brief description of the METS scores.

### Unsuccessful Results

If the test was unsuccessful, the Lower Display will post "Unable to complete test." The Fit Test may not be able to complete the test for a variety of reasons:

- **The STOP key was pressed** The program was concluded before enough information could be gathered. No test results are posted.
- **Heart Rate Too High** If the user's heart rate reached 85% of Max for more than thirty (30) seconds, the program will end. Depending upon the previous progress made in the test, the METS score may, or may not be provided
- **No RPM / RPM Too Low** If the console does not detect an adequate RPM, the console will enter Pause mode. If the program is paused and resumed several times, it is possible that no fitness score will be returned.
- **No Pulse Signal** If a pulse signal is not detected by the console for a period of thirty (30) seconds, the program will end and the test will be unsuccessful. When an unsuccessful Fit Test result is returned, the program will end and return to the Idle mode.

## PROGRAMS

### CLASSIC PROGRAMS

#### Classic Programs Overview

Interval, Hill Climb, Strength, Fat Burn, Random and the Lap programs are considered classic programs.

##### Interval



The six (6) Interval programs offer profiles with periods of high exertion alternating with periods of rest. Intervals are an excellent way to increase endurance.

##### Hill Climb



The Hill Climb programs simulate climbing exercises with six (6) preset hill profiles.

##### Strength



The Strength program category offers six (6) workout profiles. Each is designed to gradually increase the resistance to help build the users strength and endurance.

##### Fat Burn



The three (3) Fat Burn programs are designed to maintain a relatively low level of exertion over the course of the workout. Keeping the heart rate at the lower range encourages weight loss.

##### Random



The five (5) Random programs are designed to offer the greatest amount of variety within the work out. The profiles will incorporate varied levels of resistance to simulate a hiking trail's non-patterned terrain.

##### Lap



The 5K Lap and 10K Lap programs simulate a traditional running track course. Depending upon the profile selected, the user will travel 5 or 10 Kilometer in one loop. The eighty-four (84) segments will represent 1/84th of the total distance. The user's progress in the program will be displayed as a flashing cursor on the lap course. The lap will begin and end at the arrow at the lower right corner of the profile.

## PROGRAMS

### Classic Program Selection

From the Idle mode, press the QuickSet Program key to open the desired category. The first available course profile will post in the Display Matrix. Use the UP and DOWN arrow keys to view all course profiles. Press the ENTER key to select the displayed profile and launch the Classic Programs Setup Mode.

### Classic Programs Setup Mode

Once a Classic Program has been selected, on-screen messaging will guide the user throughout the Setup Mode.

**NOTE:** *The user may press the GO key at any time during the Setup mode to bypass the setup and begin the workout immediately with previously-saved default values. Note that the heart rate feedback will only be accurate if values for the selected profile are correct for the current use.*

### User Selection

"Select user" will post in the Lower Display. "User 1" or the previously-entered User 1 name value will scroll in the Matrix Display. Use the UP and DOWN arrow keys to view the user selection options ("User 1", "User 2" or "Guest"). When the desired user profile is displayed, press the ENTER key to select. Guest user will run with default data and will not operate all heart rate functions. If the User Setup steps for the selected profile have not been completed, the console will launch the User Setup mode (see the section titled User Setup Mode for more information), otherwise, the program will launch immediately.

### Classic Programs Launch Mode

Once the Classic programs have launched:

- The Matrix Display will post the workout profile and the current progress in the program will be indicated by a flashing stack of segments. The height of the stacks represents the level of resistance; the higher the stack, the greater the resistance. The resistance may be adjusted manually via the UP and DOWN arrow keys.
- The Level display will indicate the current resistance level. The range is from 1 to 32.

## PROGRAMS

- Total Time field will display the progress made in the total workout. Segment Time will display the progress made in the current segment. The displays will switch between elapsed and remaining time. Elapsed time will count up, while remaining time will count down. To freeze the switching and display only elapsed or remaining time, press the RIGHT arrow key while the desired display is visible. Press the RIGHT arrow key again to resume switching mode.
- The Watts field will display the current output or work being generated by the user.
- Total Distance for the current workout session will be displayed.
- The Calories field will record the number of calories burned during the workout session.
- RPM or revolutions per minute and Speed will be displayed.
- Visual Key Prompting will operate. The LED lamps on the keypad will flash to indicate which can be keys can be used to make adjustments to the current programming.

### Ending a Classic Program

At any time during the program, the user may press the STOP key to pause the programming for up to five (5) minutes. To restart the current program, press the GO key. To end the program and view the Workout Summary, press the STOP key twice while the program is running. Pressing the STOP key three (3) times while the program is running will end the program, bypass the Workout Summary and return the console to Idle mode.

## USER SETUP MODE

The User Setup mode may be launched in two ways:

- To manually enter the User Setup mode, press and hold the USER arrow key for two (2) seconds.
- During the Program Selection mode, if a user profile is selected for the first time, User Setup mode will launch automatically, then return to the Program Setup mode.

When the User Setup mode is launched, “User 1” will display in the Matrix Display. Use the UP and DOWN arrow keys to view the user profile options (“User 1” or “User 2”). Press ENTER when the desired profile is displayed.

### **User Name Data Entry**

"User 1 Name" or "User 2 Name" will post in the lower display and "User 1" or "User 2" will post in the Matrix Display field (depending upon which user profile was selected). Pressing the ENTER key will allow the user to personalize the data for the displayed profile. If the user name has been previously adjusted, the entered name will then scroll once and post with the first character blinking. Adjust the first character via the UP and DOWN arrow keys. Press the RIGHT arrow key to confirm the character selection and move to cursor the next character. The choice of available characters is A - Z, a - z, 0 - 9 and the " " (space). The user may store up to ten (10) characters for each user name. If the desired name is less than ten (10) characters, press ENTER to save settings and launch Workout Time data entry.

### **User Workout Time Data Entry**

"Workout time" will post in the lower display and the default value of "30:00" (or the previously-adjusted value) will flash in the Total Time display. Use the UP and DOWN arrows to adjust the workout time for this user profile. The range for workout time is 01:00 to 1:59:00. Press ENTER to confirm the workout time and enter Age data entry.

### **User Age Data Entry**

"User 1 Age" or "User 2 Age" will post in the lower display (depending upon which user profile was selected). The default previously adjusted user age value will flash in the Matrix Display. Use the UP and DOWN arrows to adjust the age for this user profile. The available user age value must be between ten (10) and ninety-nine (99) years, inclusive. Press the ENTER key to confirm the age setting and enter User weight entry.

### **User Weight Data Entry**

"User 1 weight" or "User 2 weight" will post in the lower display (depending upon which user profile was selected). The default or previously adjusted user weight value will flash in the Display Matrix. Use the UP and DOWN arrows to adjust the weight for this user profile. The available user weight value must be between 23 and 350 pounds (or 10 and 150 Kilograms if the console is set to metric units), inclusive. Press the ENTER key to confirm the weight setting and enter User Gender entry.

### **User Gender Data Entry**

“User 1 gender” or “User 2 gender” will post in the lower display (depending upon which user profile was selected). The default or previously adjusted user gender value will flash in the Display Matrix. Use the UP and DOWN arrow keys to view the user gender options (“Male”, “Female”). To select the displayed gender setting, press the ENTER key. Press the ENTER key to return to the User Setup profile selection mode, or press STOP to save all adjusted settings and return to Idle mode or previous program.

## **MAINTENANCE**

All Diamondback Fitness products are engineered for years of near-silent operation. Let noise be your first indication that a repair or adjustment is required. Please, discontinue use immediately and contact an Authorized Service Technician or Diamondback Fitness Dealer if an unusual noise, scraping, knocking, grinding or vibration is detected. Often, a minor issue will become a major repair if ignored and use is continued.

Prior to each workout, confirm that all adjustment levers and screws are tightened. Tighten crank arms once per month. Loose cranks arms will become damaged and are not covered under the Warranty.

Your Diamondback Fitness product is manufactured of the most durable materials available. The plastics are molded of strong and chemical-resistant ABS and PVC. The frame is produced of high-tensile steel and protected with an industrial-grade, powder paint coating for the highest level of corrosion resistance. It is important to note however, that perspiration can be extremely corrosive if allowed to accumulate on the machine. After training, always wipe down the unit with a mild soap solution followed by a thorough drying with a clean towel. Locating a small spray bottle and towel near the unit will help ensure that your Diamondback Fitness equipment looks new for many years.

***NOTE: Perspiration is very corrosive and if allowed to remain on the machine, will cause discoloration, fading, rust and odors. Unfortunately, these conditions are not covered under the Warranty Policy.***



## WARRANTY INFORMATION

Diamondback Fitness warrants this unit to be free from defects in material and workmanship under normal use in the home environment. Diamondback Fitness's obligation under this warranty is limited to the repair or replacement of any defective part, provided free of charge through an Authorized Service Agent. This warranty is extended to the original purchaser. The following conditions apply:

### Who is Covered

The warranty is extended to the individual whose name appears on the Warranty Registration filed with Diamondback Fitness and may not be transferred to any other individual or legal entity. In the absence of a valid Warranty Registration, the original sales receipt will serve as satisfactory documentation of the valid warranty status.

### To Obtain Service

To obtain service, you must contact your Authorized Diamondback Fitness Dealer. Your dealer is also your Authorized Service Agent. An Authorized Service Agent must diagnose your unit to begin the warranty claim process.

### Warranty Registration

Warranty commitments are valid only with a completed Warranty Registration. Registration is available online at [www.diamondbackfitness.com](http://www.diamondbackfitness.com). Alternatively, a warranty card may be mailed to Diamondback Fitness. (See page 33)

### Proof of Purchase

Proof of purchase from a Diamondback Fitness Authorized Dealer will be required if the warranty card is not registered.

### What is Covered – For Interior Residential Use Only.

- Frame Limited lifetime warranty; covers defects in welds, materials, and workmanship (some exclusions apply).
- Brake Limited lifetime warranty
- Parts & Electronics 3 years
- Labor 1 year
- Wear Items 90 days

## WARRANTY INFORMATION

***Note: Limited lifetime refers to warranty coverage of the unit's expected service life, not the lifetime of the purchaser. The expected lifetime of this unit is five (5) years from the date of purchase although other factors can extend this period. Support and maintenance of the unit may become difficult or impossible after this period expires.***

### **Voided Warranty**

The warranty does not apply to any failure of the product or its components due to alterations or modifications, misuse and abuse, accidental damage, lack of maintenance or improper assembly. Improper assembly can be avoided if the unit is assembled by an authorized technician. Damage due to improper assembly is not covered by the warranty. Common assembly errors can include damaged wire harnesses, stripped screws and nuts, crank arms or damaged threads.

If the serial number has been removed, altered or defaced, the warranty for the affected unit is voided.

### **Other Exclusions**

The warranty for this unit is void if it is placed in commercial or light commercial environments such as health clubs, schools, hotels, condominium common areas, correctional facilities, or any other non-residential setting.

The warranty will not be honored if this unit is employed for commercial or rental purposes.

This unit is for indoor use only.

### **Additional Rights**

This Warranty is expressly in lieu of all other warranties, and any implied warranties of merchantability or fitness for a particular purpose created hereby, and are limited to the same duration as the express warranty herein. Diamondback Fitness shall not be liable for any incidental or consequential damages. Some states do not allow the exclusion or limitations of implied warranties, incidental or consequential, so the above limitations and exclusions may not apply to you.

Retailers and wholesale outlets for Diamondback Fitness products are not authorized to modify this warranty in any way.

This warranty gives the original owner specific legal rights. Other additional rights may vary from state to state.

## PARTS & SERVICE

Contact the Authorized Diamondback Fitness Dealer which originally sold the unit. If you have moved, or the retailer is unavailable, visit the Diamondback Fitness dealer locator site at [www.diamondbackfitness.com](http://www.diamondbackfitness.com) to help locate an alternate Authorized Dealer.

Diamondback Fitness is not responsible for securing warranty service and/or honoring extended warranties provided by dealers.

***NOTE: Authorized service technicians do not reside in all areas of the country. If you live beyond the reasonable service area of a metropolitan area, Diamondback Fitness may not be able to support the labor portion of the product warranty. Travel fees charged by technicians are not covered by the warranty.***

Although current at the time of this printing, specifications for this model may have changed in our continuing effort for improvement. Diamondback Fitness reserves the right to modify and improve the specifications of its products without prior notice



# 910Ef Owner's Manual

***Important! • Important! • Important! • Important! • Important! •***

***The warranty card must be completed and returned to Diamondback Fitness within 15 days of purchase. Failure to comply may void the manufacturer's warranty. You may also register your product via the web at: [www.diamondbackfitness.com](http://www.diamondbackfitness.com)***

Your Name: \_\_\_\_\_

Address: \_\_\_\_\_

City: \_\_\_\_\_

State: \_\_\_\_\_

Zip: \_\_\_\_\_

Daytime phone No.: \_\_\_\_\_

Evening phone No.: \_\_\_\_\_

Dealer Store Name: \_\_\_\_\_

Address: \_\_\_\_\_

City: \_\_\_\_\_

State: \_\_\_\_\_

Zip: \_\_\_\_\_

**Model:**    **910Ef**

**Serial No.:** **E** \_\_\_\_\_

**Purchase Date:** \_\_\_\_\_

Mail completed warranty form to:

Diamondback Fitness - Warranty Card, 6004 South 190th Street, Suite 101, Kent WA 98032









**DIAMONDBACK**  
*Fitness*



DIAMONDBACKFITNESS.COM • 6004 S. 190TH STREET, SUITE 101 • KENT, WA 98032 • PH: 800.776.7642

©2011 DIAMONDBACK FITNESS